

CONNECTED LIVE SYSTEM

The Connected Live ecosystem offers an all-in-one, plug-and-play radio camera system for simplified wireless workflows, offering forward path video, return video, and camera control through a single unit.

The system is based on our new proprietary OFDM bidirectional data radio and an integrated encoder/decoder platform. This enables forward path and return video in 10-bit HDR 4:2:2 up to 1080p60 frame formats, with a licensable 4K upgrade in the future. Our well-known camera control is integrated in both the camera unit and the base unit to simplify the setup and minimise installation time.

IP trunk transparency, advanced network configurations, PoE, and flexible RF configurability (in both licensable and licence-free frequencies) add an additional layer of functionality that will suit more demanding users. Simultaneously, a range of user levels and recallable configurations allow the end user to choose the level of complexity that is required, and ensure quick and effortless deployment.

CL-RTX | Transceiver



Return
Video



Licenced
Frequency



Third Party
Services



4K Upgradable
Path



Dual-Band
Frequency



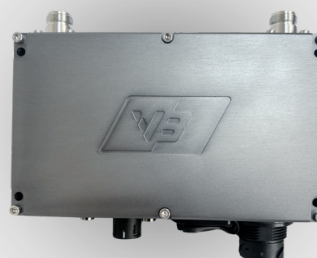
Power over
Ethernet



Multi-Zone



Weatherproof



CL-NODE | Receiver Node

CL-BASE | Receiver Unit



Camera
Control



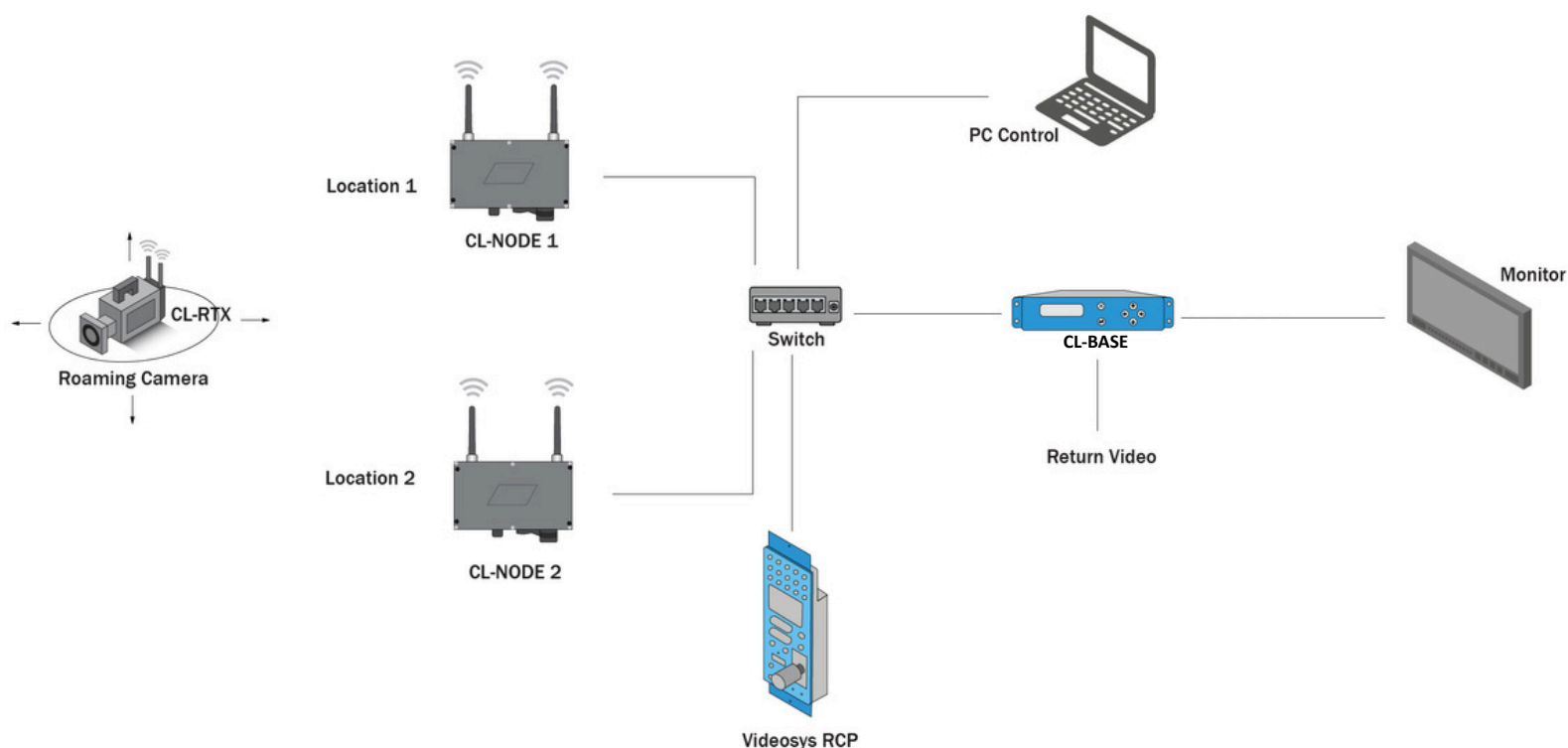
Genlock /ANC
(future)



1080P 10-Bit
HDR 4:2:2

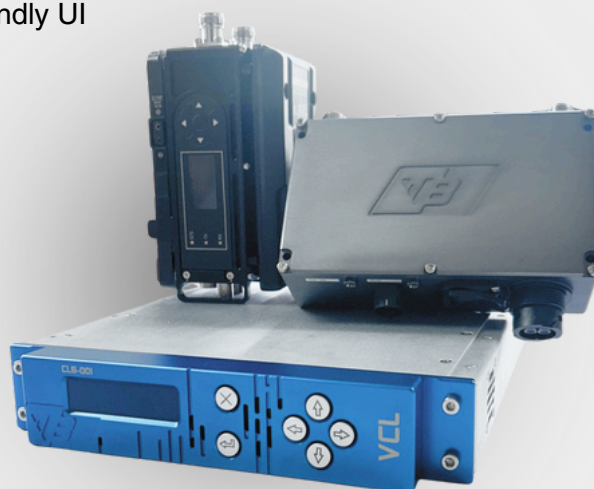


Extra
Monitoring



Key Features:

- **HD HDR 10-bit 4:2:2** encoder and decoder
- **Bidirectional video** transmission
- **Integrated camera control** for all major manufacturers (Serial and Ethernet cameras supported)
- **Unicast or Multicast** video streaming
- Dual band radio at 2.4GHz and 5GHz that can be used in both bands simultaneously
- Dynamic modulation scheme selection based on the environment and link quality
- Frequency tuning in both **licenced** and **licence-free** bands
- **Transparent IP trunk** with 2 available full-size RJ45 ports on the camera back unit
- **Remote control** of the whole system from anywhere on the Connected Live network
- Build-in media converter to allow for a network over fibre connection
- User-friendly UI



T: +44 (0)1293 541 200

E: sales@videosys.tv

W: videosys.tv

The information contained in this document is the property of VideoSys Broadcast Ltd. This document and the information contained herein is provided for evaluation purposes only and is subject to change without notice. VideoSys Broadcast Ltd assumes no responsibility for errors that might appear in this document and gives no representations or warranties as to the accuracy of the information contained herein, including but not limited to the suitability and performances of the product or its intended application.