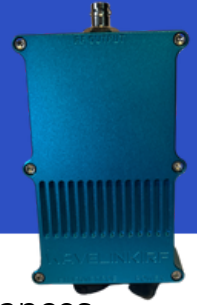


## Raptor Telemetry Gateway Streamlined Control for Unmatched Operational Efficiency



Streamline your live sports broadcasts with the Raptor Telemetry Gateway. Designed for operational efficiency, it puts full control of Raptor Video Transmitters at your fingertips. Fully integrated with CyanView RCP camera control, it minimizes the need to move around the venue, letting you focus on delivering top-tier coverage. Monitor battery levels and system status in real-time, switch to standby mode to conserve battery, and change frequencies at a moment's notice to ensure seamless operation.

### Application

- Drone
- Advanced POV
- Body Worn
- Covert/Overt Surveillance
- OEM Integrations

### Operational Efficiencies at the Core

At its core, the Raptor TTX Gateway enhances operational efficiencies, providing a streamlined mechanism for overall performance improvements.

### Broadcast-Grade Control

Designed with modern IP control techniques, the Raptor Control Gateway fully integrates with CyanView RCP, extending control from the broadcast facility directly to the action.

### Live action control and monitoring

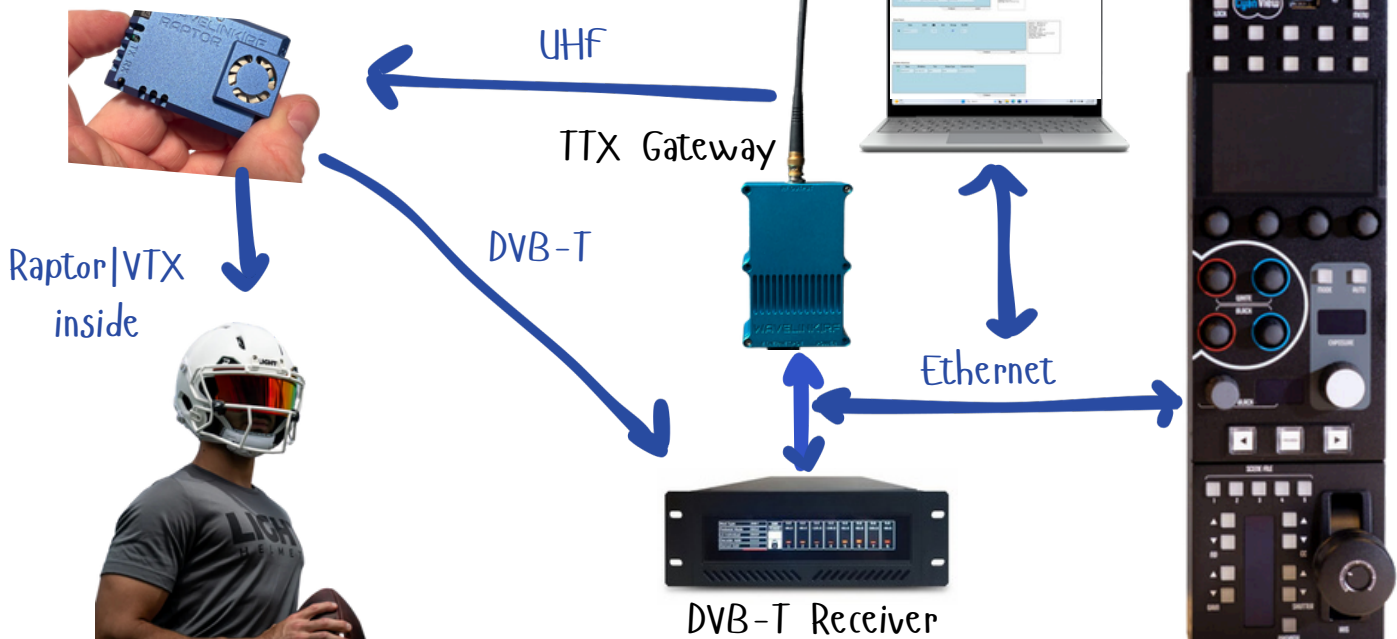
```
Model No: - RPTTX-2.0-2.5
Serial No: - 20242802-02
Input Voltage - 7.5 V
Current Draw - 649.4 mA
Power Draw - 4.9 W
Temperature (Int.Enc) - 53.5°C: 65.4°C
Alarm flags - 0x00000000
Up Time: 00:03:31
```

### Supported Cameras include:

- Marshall, Dream Chip, Proton and Kestrel

### Now supports multiple Raptor control

- Control multiple raptors, and cameras using one Gateway
- Live Action Monitoring



# SPECIFICATIONS

Frequency	In bands Power	430-470, 868, 902-928 † 1/2Watt, 1KHz Step size
Modulation	Narrow band GFSK	Wideband CSS
Control	Web page	
Power	PoE	<ul style="list-style-type: none"> <li>802.3af PoE</li> <li>Fully isolated switched-mode power supply</li> <li>37-57V DC, Class 2 device</li> </ul>
Physical	Size/Weight	1.623H (40mm) x 5.25L (130mm) x 3.4"w (86mm) 3.4"H (86mm) x 5.25L (130mm) x 3.4"w (86mm) 1.2lbs/550g
Connection	Tx Ethernet	BNC-F RJ-45
Mount	Tripod Custom	5/8" hole, 1/4x20 6x 8-32 screw holes

† Some bands not available for sale pending FCC certification

TTX ID	Frequency	Modulation	Tx Mode
9	450.0000	GFSK-12.5kHz-Pulse	Low Power

Configure Cancel



Remote Raptor

Name	Active	Alert	Message	Rx RSSI
Raptor 01	<input checked="" type="checkbox"/>	<input type="checkbox"/>	<input type="checkbox"/>	-58

Serial No: 20242882-02

ID: 10

Mode: Low Power

Freq: 2031.500

Telemetry Rx

RSSI	Packet Count
-58	304

Packet Count: 304

Error Count: 0

Data Rate: 80

## WAVELINK|RF

wavelinkrf.com

letsconnect@wavelinkrf.com

PROPRIETARY AND CONFIDENTIAL

The information contained in this document is the sole property of The Crest Factor, LLC DBA WavelinkRF. Any reproduction in part or as a whole without the written permission of The Crest Factor, LLC DBA WavelinkRF is prohibited. Specifications may change without notice.

Newton, NJ 07860

+1-973-219-9823